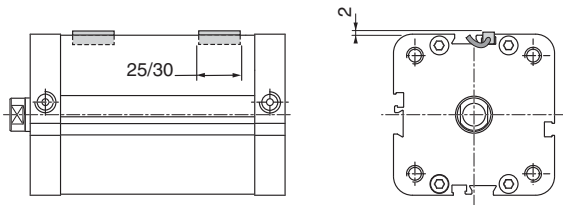


### FOR "T" GROOVE CYLINDERS

| CYLINDERS |        | Leaflet | cylinder<br>Ø | CODE<br>FASTENING<br>KIT |
|-----------|--------|---------|---------------|--------------------------|
| Type      | Series |         |               |                          |
| - PEC     | 449    | P226    | 32 ... 100    | (1)                      |
| - PES 453 | 453    | P229    | 32 ... 100    |                          |
| - PES Ω   | 453    | P234    | 32 ... 80     |                          |
| - CSC     | -      | P226B   | 20 ... 80     |                          |
| - CGT     | -      | -       | 16 ... 63     |                          |

(1) Fastening mini-kit (special nut + screw) supplied **with** detectors



**NOTE:**

- PEC cylinders
  - PES 453 cylinders
- |             |   |                        |
|-------------|---|------------------------|
| Ø 32        | : | 3 grooves «T»          |
|             | : | 1 swallow tail grooves |
| Ø 40 mm     | : | 4 grooves «T»          |
|             | : | 1 swallow tail grooves |
| Ø 50 mm     | : | 5 grooves «T»          |
|             | : | 1 swallow tail grooves |
| Ø 63-100 mm | : | 4 grooves «T»          |
|             | : | 4 swallow tail grooves |

In order to control the **max. end** of cylinder stroke, the detectors must be mounted in the following direction:

**PEC cylinder:**

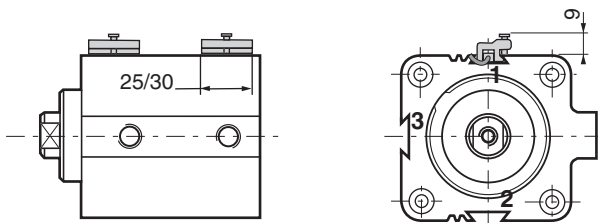
- Ø32-40: cable oriented towards the middle of the cylinder
- Ø50-100: any position

**PES 453 cylinder:**

- Ø32-40: cable oriented towards the middle of the cylinder
- Ø50-100: any position

### FOR SWALLOW TAIL GROOVE CYLINDERS

| CYLINDERS   |        | Leaflet | cylinder<br>Ø | CODE<br>FASTENING<br>KIT |
|-------------|--------|---------|---------------|--------------------------|
| Type        | Series |         |               |                          |
| - K         | 441    | P215    | 8 ... 16      | N199-1163                |
| - P2L - P2B | 447    | P275    | 16 ... 32     |                          |
| - PES 453   | 453    | P229    | 32 ... 100    |                          |



**NOTA :**

- K cylinders
- |               |   |                       |
|---------------|---|-----------------------|
| Ø 8 - 12 mm   | : | 2 grooves en 1 et 2   |
| Ø 16 - 100 mm | : | 3 grooves en 1,2 et 3 |

In order to control the **max. end** of cylinder stroke, the detectors must be mounted in the following direction:

**K cylinder:**

- Ø8-10-12: cable oriented towards the middle of the cylinder
- Ø16 front cover: any position
- Ø16 rear cover: cable oriented towards the middle of the cylinder

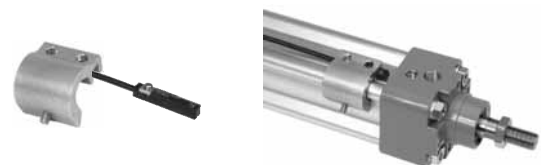
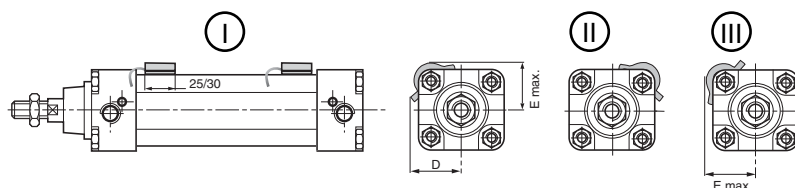
**P2B/P2L cylinders** : any position

**PES 453 cylinder:**

- Ø32-40: cable oriented towards the middle of the cylinder
- Ø50-100: any position

### FOR PROFILED BARREL CYLINDERS

| CYLINDERS |        | Leaflet | cylinder<br>Ø                | CODE<br>FASTENING<br>KIT            |
|-----------|--------|---------|------------------------------|-------------------------------------|
| Type      | Series |         |                              |                                     |
| - PES 450 | 450    | P230    | 32-40<br>50-63<br>80-100-125 | N199-1047<br>N199-1048<br>N199-1049 |



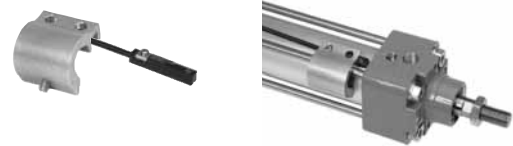
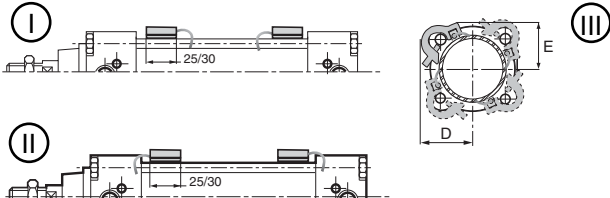
| Ø cylinder | 32 | 40 | 50 | 63 | 80 | 100 | 125 |
|------------|----|----|----|----|----|-----|-----|
| D          | 28 | 32 | 37 | 41 | 58 | 65  | 73  |
| E          | 28 | 31 | 36 | 40 | 54 | 62  | 73  |

- I It is possible to mount additional magnetic detectors for **intermediate** position indication.
- II In order to fasten the detector with its electric outlet to the **rear**, mount the detector + the mounting bracket.
- III The detectors can be mounted on any one of the 4 **bosses**.

### FOR TIE RODS CYLINDERS



| CYLINDERS |        | Leaflet | cylinder<br>Ø | CODE<br>FASTENING<br>KIT |
|-----------|--------|---------|---------------|--------------------------|
| Type      | Series |         |               |                          |
| - PCN     | 437    | P245    | 25            | N199-1051                |
| - PES 450 | 450    | P232    | 32-40         | N199-1047                |
| - PES Ω   | 450    | P234    | 50-63-80      | N199-1048                |
| - PCN     | 437    | P245    | 100-125       | N199-1049                |
|           |        |         | 160-200       | N199-1050                |



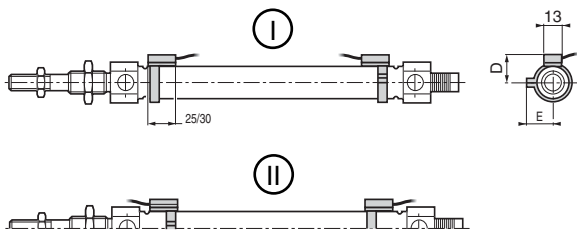
| Ø cylinder | 25 | 32 | 40 | 50 | 63 | 80 | 100 | 125 | 160 | 200 |
|------------|----|----|----|----|----|----|-----|-----|-----|-----|
| D          | 24 | 30 | 33 | 38 | 44 | 50 | 69  | 77  | 89  | 104 |
| E          | 24 | 26 | 30 | 35 | 39 | 49 | 61  | 69  | 87  | 101 |

- I It is possible to fasten the detector with its electric outlet to the centre of the cylinder (in order to be able to control the **max. end** of travel of the cylinder)
- II In order to fasten the detector with its electric outlet to the rear, rotate **the unit** detector + collar by 180°
- III The detectors can be mounted on any one of the 4 **tie rods**.

### POUR VERINS RONDS

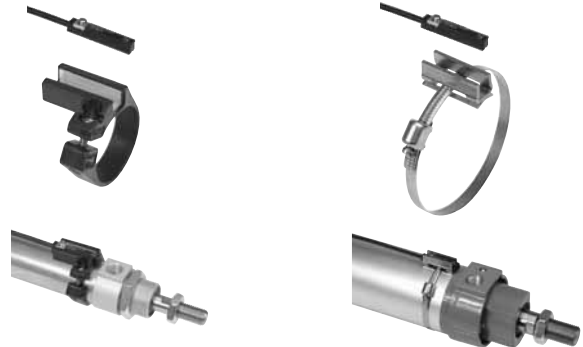


| CYLINDERS |        | Leaflet | cylinder<br>Ø | CODE<br>FASTENING<br>KIT |
|-----------|--------|---------|---------------|--------------------------|
| Type      | Series |         |               |                          |
| ISOCLAIR  |        |         | 8-10          | N199-1037                |
| - C.AS    | 435    | P220    | 12            | N199-1038                |
| - CC.AS   | 435    | P220    | 16            | N199-1039                |
| - CIS     | 438    | P225    | 20            | N199-1040                |
| - CIB     | 447    | P275    | 25            | N199-1041                |
|           |        |         | 32            | N199-1042                |
|           |        |         | 40            | N199-1043                |
|           |        |         | 50            | N199-1044                |
|           |        |         | 63            | N199-1045                |



Ø 12 to 40

Ø 8 - 10  
Ø 50 - 63



It is possible to mount magnetic detectors for **intermediate** position indication : mounting by collar

Ø 8-20 : any position.

Ø 25-63 : cable oriented towards the cylinder ends

| Ø cylinder | 8    | 10   | 12   | 16   | 20   | 25   | 32   | 40   | 50   | 63   |
|------------|------|------|------|------|------|------|------|------|------|------|
| D          | 14,5 | 15,5 | 15   | 16,5 | 19   | 21,5 | 26,5 | 31   | 38   | 45   |
| E          | 13,5 | 14,5 | 16,5 | 19   | 20,5 | 23   | 29,5 | 31,5 | 36,5 | 43,5 |

- I On all diameters, it is possible to mount the detector with its electrical outlet facing towards the cylinder barrel (in order to be able to control the **max. end** of travel of the cylinder).
- II In order to fasten the detector on cylinder diameters 25 to 63 with its electrical outlet facing towards the cylinder ends, rotate the detector + collar **unit** by 180°.