

FEATURES

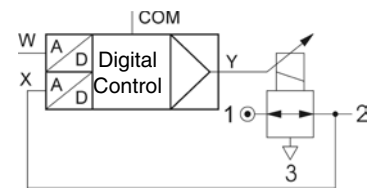
SENTRONIC^{HD} is a high-definition 3-way proportional valve with digital control. SENTRONIC^{HD} stands for high-definition pressure regulation. The DaS-HD software is supplied to offer optimum adjustment over PC and viewing of all process variables. It allows easy diagnostics, parameter setting and maintenance.

GENERAL

Fluids	Air or neutral gases, condensate-free, lubricated or unlubricated Class 5 to ISO 8573-1
Ports	G1/4
Max. allowable pressure	12 bar
Pressure range	See "PRODUCT CODE" overleaf
Fluid temperature	0...50 °C
Ambient temperature	0...50 °C
Hysteresis	± 0,25 % of span
Linearity / pressure measurement	± 0,25 % of span
Repeatability	± 0,25 % of span

CONSTRUCTION

Body	Pilot operated valve Aluminium
Internal parts	Stainless steel, brass, aluminium and POM
Seals	FPM
Degree of protection	See table below



ELECTRICAL CHARACTERISTICS

nominal diameter DN	stabilised voltage *	max. power (W)	max. current (mA)	insulation class	degree of protection	electrical connection
6	24 V DC +/-10%	5	240	F	IP65	8-pin M12 connector, A coded (not supplied)

* Max. ripple: 10 %

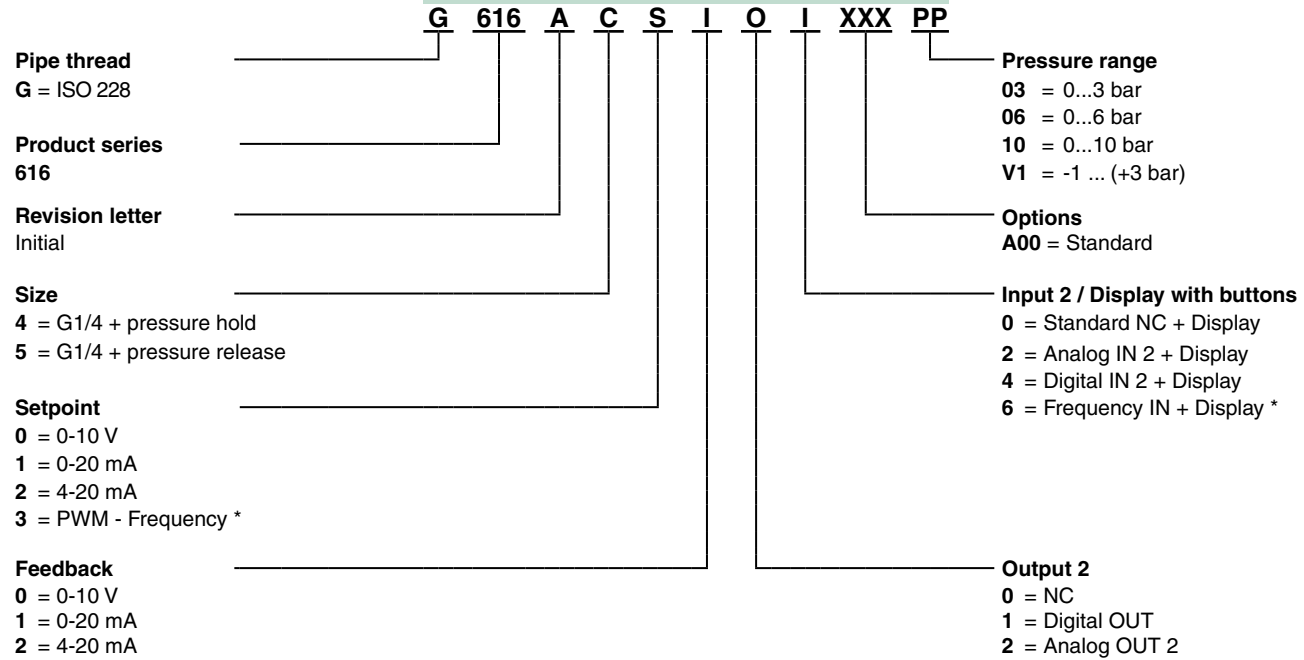
SPECIFICATIONS

pipe size	orifice size (mm)	flow	
		coefficient Kv (Nm ³ /h)	at 6 bar (l/min - ANR)
G 1/4	6	1,12	1200

DP14276GB-2015/R01 Availability, design and specifications are subject to change without notice. All rights reserved.

HOW TO ORDER

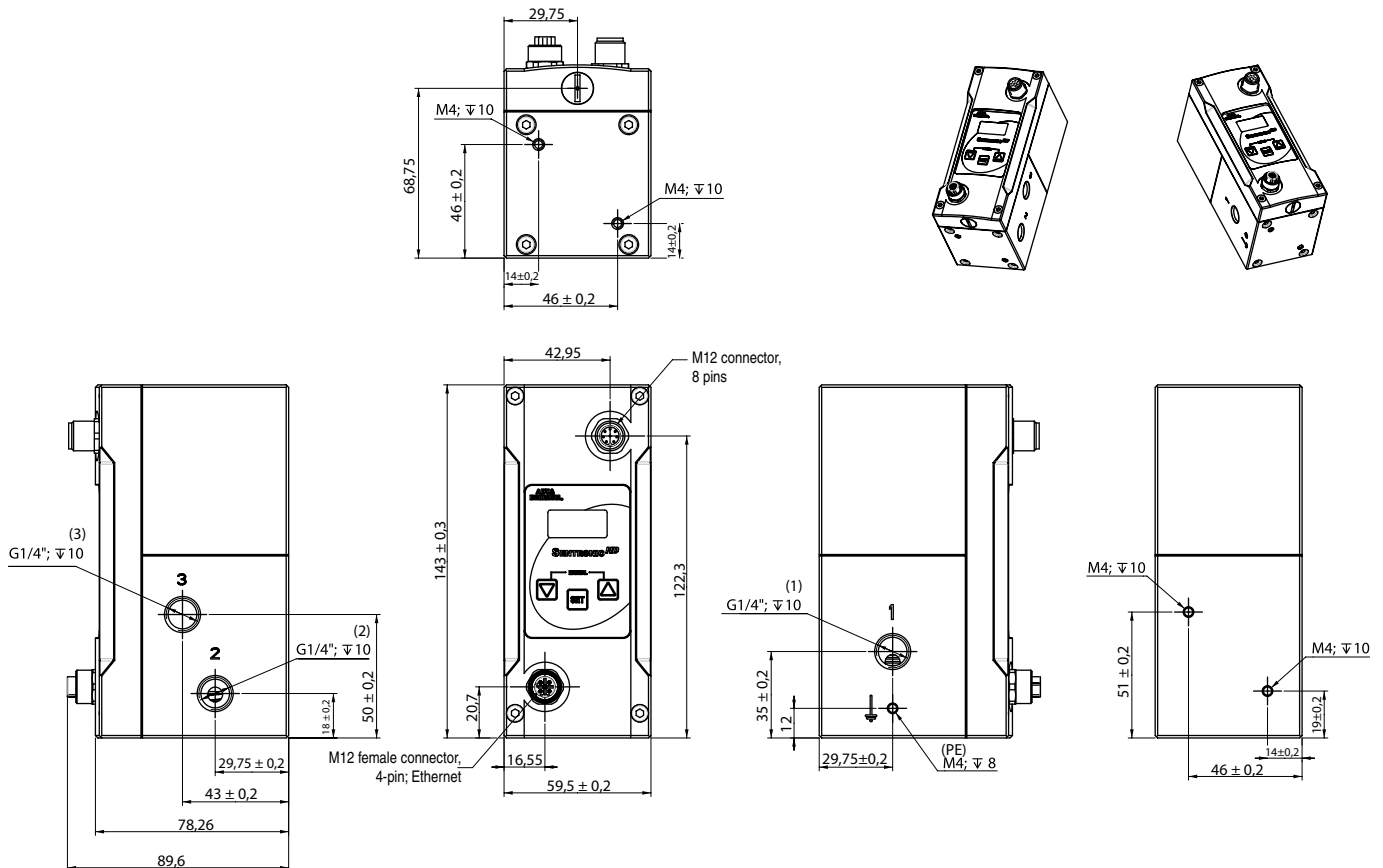
15-DIGIT PRODUCT CODE



* If Setpoint PMW-Frequency is selected, frequency input is not available at IN 2

DIMENSIONS (mm), WEIGHT (kg)

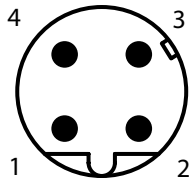
Weight: 1,6 kg



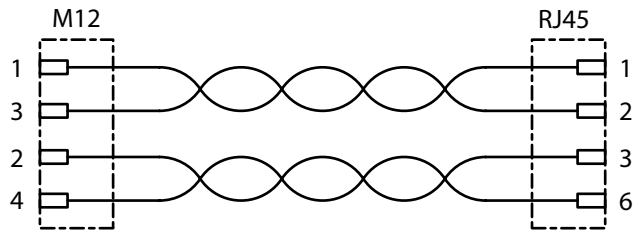
CONNECTOR PINNING / CABLE WIRING

Ethernet IP programming interface

**M12 male connector,
4-pin, D coded**

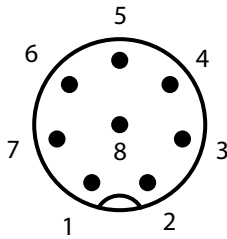


View on male connector
(the device is equipped
with a female connector)



*) The use of a shielded cable is recommended.

**M12 male connector,
8-pin, A coded**



View on valve

Pin	Description	8-wire cable (5 m, 10 m)
1	Digitaler input	white
2	+24 VDC voltage supply	brown
3	Setpoint ground SET-	green
4	Setpoint SET+ (PWM)	yellow
5	Analog input 2 / Digital input 2 / Frequency input	grey
6	Analog output	pink
7	Ground 24VDC	blue
8	Digital output / Analog output 2	red
Body	EMC screen	shield

ACCESSORIES

description	catalogue number
Supply cable 5 m; 8x0,50 mm ² ; straight connector	N43802302700000
Supply cable 10 m; 8x0,50 mm ² ; straight connector	N43802302800000
Supply cable 10 m; 8x0,50 mm ² ; right-angle connector	N43802302900000
Programming cable 2 m; M12 to RJ45 connector	N43802302600000

