



FEATURES

- To be mounted on the exhaust port of a solenoid valve to protect internal parts from the environment

GENERAL

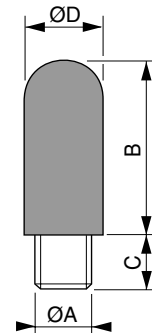
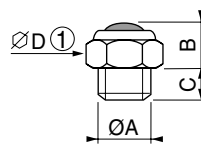
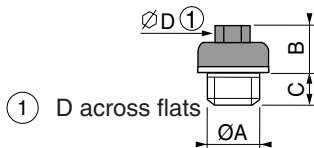
	Bronze	Stainless steel	Porous plastic
Differential pressure	0 to 10 bar	0 to 10 bar	0 to 10 bar
Fluid temperature range	-10°C to +70°C	-10°C to +70°C	-10°C to +70°C
Ambient temperature range	-10°C to +70°C	-10°C to +70°C	-10°C to +70°C
Load loss	Minimum	Minimum	Minimum
Differential pressure			
Body	Porous bronze	Sintered st. steel	Porous plastic
Connection piece	Brass	Nickel-plated brass	Plastic
Pipe size	G 1/8 or G 1/4	G-NPT 1/8 to 1/2, M5	G 1/8 to 1/2, M5



SPECIFICATIONS

pipe size	catalogue number		
	Bronze (set of 2)	Sintered st. steel	Porous plastic
G 1/8	97701875	34600418	34600406
G 1/4	97701876	34600419	34600407
G 3/8	-	34600478	34600408
G 1/2	-	34600479	34600409
M5	-	34600484	34600405
NPT 1/8	-	34600482	-
NPT 1/4	-	34600483	-
NPT 3/8	-	34600480	-
NPT 1/2	-	34600481	-

DIMENSIONS (mm), WEIGHT (kg)



Porous bronze (set of 2)					
catalogue number	Ø A	B	C	D	weight
97701875	1/8	7	5	7	0,004
97701876	1/4	10	6	9	0,010

Sintered st. steel					
catalogue number	Ø A	B	C	D	weight
34600418/482	1/8	10	6	13	0,006
34600419/483	1/4	11	8	16	0,010
34600478/480	3/8	11	9	19	0,014
34600479/481	1/2	14	9	24	0,023
34600484	M5	4,5	3,2	8	0,001

Porous plastic					
catalogue number	Ø A	B	C	D	weight
34600406	1/8	27	6	13	0,002
34600407	1/4	34	7	15	0,004
34600408	3/8	55	11	18	0,006
34600409	1/2	62	12	23	0,010
34600405	M5	16	5	7	0,0005